



Basic / Intermediate / Expert

# How to fix issue with Bootloader

## In spaceLYnk / Wiser for KNX

### Application note

LSS100100 / LSS100200

03/2020



# Legal Information

The Schneider Electric brand and any trademarks of Schneider Electric SE and its subsidiaries referred to in this guide are the property of Schneider Electric SE or its subsidiaries. All other brands may be trademarks of their respective owners.

This guide and its content are protected under applicable copyright laws and furnished for informational use only. No part of this guide may be reproduced or transmitted in any form or by any means (electronic, mechanical, photocopying, recording, or otherwise), for any purpose, without the prior written permission of Schneider Electric.

Schneider Electric does not grant any right or license for commercial use of the guide or its content, except for a non-exclusive and personal license to consult it on an “as is” basis. Schneider Electric products and equipment should be installed, operated, serviced, and maintained only by qualified personnel.

As standards, specifications, and designs change from time to time, information contained in this guide may be subject to change without notice.

To the extent permitted by applicable law, no responsibility or liability is assumed by Schneider Electric and its subsidiaries for any errors or omissions in the informational content of this material or consequences arising out of or resulting from the use of the information contained herein.

## Trademarks

- Microsoft Windows®, Windows® 7, Windows® 10 and Internet Explorer® are trademarks or registered trademarks of the Microsoft Corporation in the USA and/or other countries.
- iTunes® is a registered trademark of the Apple Inc. in the USA and/or other countries.
- Google Chrome™, Google Play™, Google Maps™ and YouTube™ are trademarks of the Google Inc. in the USA and/or other countries.
- Firefox® is registered trademark of the Mozilla Corporation in the USA and/or other countries.

# Important Safety Information

Read these instructions carefully and look at the equipment to become familiar with the device before trying to install, operate, service, or maintain it. The following special messages may appear throughout this manual or on the equipment to warn of potential hazards or to call attention to information that clarifies or simplifies a procedure.



The addition of either symbol to a “Danger” or “Warning” safety label indicates that an electrical hazard exists which will result in personal injury if the instructions are not followed.



This is the safety alert symbol. It is used to alert you to potential personal injury hazards. Obey all safety messages that follow this symbol to avoid possible injury or death.

## **DANGER**

**DANGER** indicates a hazardous situation which, if not avoided, **will result in** death or serious injury.

## **WARNING**

**WARNING** indicates a hazardous situation which, if not avoided, **could result in** death or serious injury.

## **CAUTION**

**CAUTION** indicates a hazardous situation which, if not avoided, **could result in** minor or moderate injury.

## **NOTICE**

NOTICE is used to address practices not related to physical injury.

## Further information



The information provided must be complied with, otherwise program or data errors may occur.



You will find additional information here to make your work easier

# Table of Contents

1	Introduction .....	6
2	Re-flash microSD card.....	6
3	Installing of update package .....	6

## For your safety



### **DANGER**

#### **HAZARD OF ELECTRIC SHOCK, EXPLOSION, OR ARC FLASH**

**Safe electrical installation must be carried out only by skilled professionals. Skilled professionals must prove profound knowledge in the following areas:**

- **Connecting to installation networks**
- **Connecting to several electrical devices**
- **Laying electrical cables**
- **Safety standards, local wiring rules and regulations**

**Failure to follow these instructions will result in death or serious injury.**

# 1 Introduction

This document provides hot fix to issue with Bootloader. We have indicated that some of controllers produced before September 2019 runs iMX6 CPU can have set incorrect RAM timing.

We believe this issue to be very minor because only several original timings were slightly less than specified in RAM documentation.

There always are minor variations in manufacturing so the documentation specifies values that will work for “all” RAM chips but most

chips will work correctly with slightly lower timings.

Incorrect setting of memory timing results in controller inability to boot. If you notice described behaviour, please follow this Application note.

# 2 Re-flash microSD card

Follow instruction in Application note How to flash microSD card and restore your card with latest FW. Link to Application note:

- Wiser for KNX:

[https://download.schneider-electric.com/files?p\\_enDocType=Application+solutions&p\\_File\\_Name=AN2\\_001\\_How\\_to\\_flash\\_microSD\\_card\\_W4K.zip&p\\_Doc\\_Ref=AN2\\_001](https://download.schneider-electric.com/files?p_enDocType=Application+solutions&p_File_Name=AN2_001_How_to_flash_microSD_card_W4K.zip&p_Doc_Ref=AN2_001)

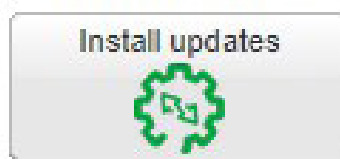
- spaceLYnk:

[https://download.schneider-electric.com/files?p\\_enDocType=Application+solutions&p\\_File\\_Name=AN2\\_001\\_How\\_to\\_flash\\_microSD\\_card\\_spaceLYnk.zip&p\\_Doc\\_Ref=AN2\\_001\\_SL](https://download.schneider-electric.com/files?p_enDocType=Application+solutions&p_File_Name=AN2_001_How_to_flash_microSD_card_spaceLYnk.zip&p_Doc_Ref=AN2_001_SL)

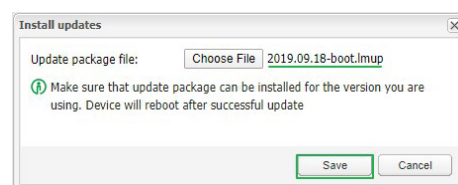
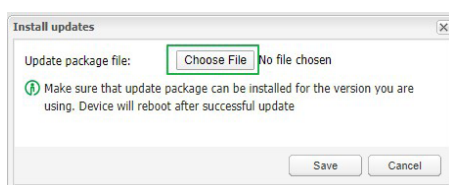
# 3 Installing of update package

Follow steps bellow and install fix package to your controller.

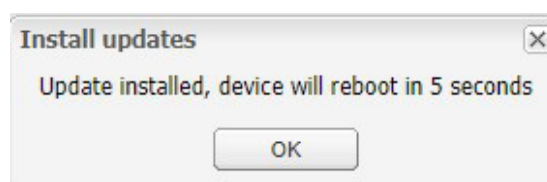
- Configurator -> Utilities -> Install updates



- Select update package '2019.09.18-boot.Imup' attached in this Application note and click save



- Controller will reboot and restore his functionality.



Schneider Electric

35 rue Joseph Monier

92500 Rueil Malmaison – France

Phone: +33 (0) 1 41 29 70 00

[www.schneider-electric.com](http://www.schneider-electric.com)

© 2020 Schneider Electric. All rights reserved.

LSS100200 Rev. 1



This document has been  
printed on recycled paper.